

waferspace 

YOUR DOOR TO A WORLD OF
OPPORTUNITIES



www.waferspace.com



“

Your work is going to fill a large part of your life, and the only way to be truly satisfied is to do what you believe is great work. And the only way to do great work is to love what you do. If you haven't found it yet, keep looking. Don't settle. As with all matters of the heart, you'll know when you find it.

Steve Jobs

”

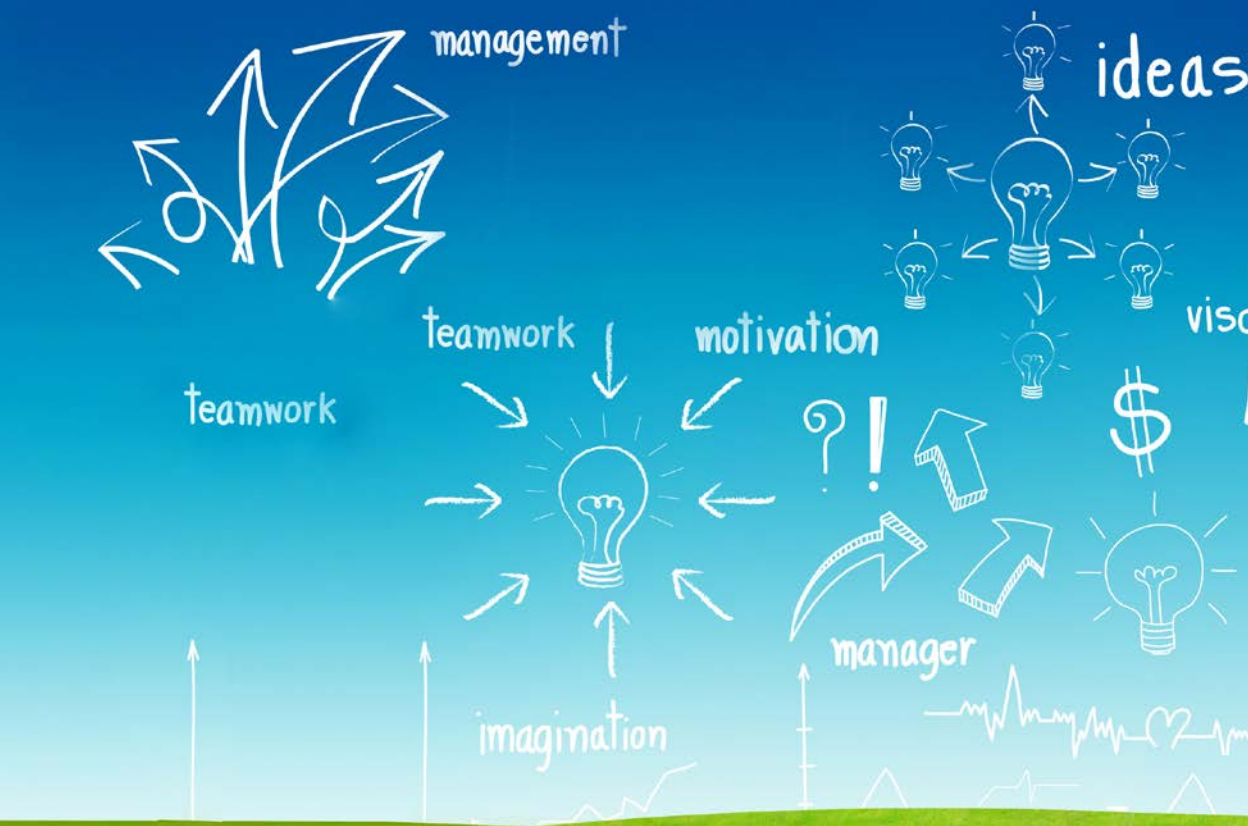
THE WAFER SPACE DIFFERENCE

When I founded Wafer Space my goal was to create a highly differentiated engineering solutions company. It has always been my belief that in order to do this, firstly we must only hire the best talent in the industry, secondly we must build a culture of creativity and constant innovation, thirdly we must provide true value to our customers by providing them with solutions rather than only talent and finally we must focus on certain areas, innovate in those areas and become a true R&D company.

Today, I am proud to say that we have achieved most of our goals and are well on the path of achieving all of them. Our team is recognized as the best team in the industry and our company has a unique culture of balancing work and play. Further we are well known for our ability to build products and execute turnkey projects. As of today, we have executed multiple projects from scratch and are also building full embedded products for our customers. We also continue to innovate and have setup a lab and centers of excellence in multiple niche areas.

I believe that our uniqueness is a combination of all the above elements, but ultimately our strength lies in our people who make Wafer Space their home. I invite you to come join us and see the Wafer Space Difference.

Rahul Malvi, Founder and CEO



WELCOME TO WAFER SPACE

EXPERTISE

Our expertise is in Semiconductor and Embedded Systems. Our strength at Wafer Space is the ability to execute a complete project. In the semiconductor space we have executed very complex projects including complete SOC designs. In the Embedded area we have the ability and have built complete Embedded products from spec. (comprehensive, wide-ranging, extensive).

TECHNICAL TEAM

We believe that an Engineering Services company should only hire the best technical talent in the industry and that is what we do very well. Wafer Space has a very rigorous selection criteria for engineers and our competitive advantage comes from our mandate of hiring only the most proficient engineers in the semiconductor and embedded sectors/ industry. This technical team combined with our senior leads and architects results in the Wafer Space Edge!

MANAGEMENT TEAM

With a strong management team armed with decades of experience overseeing large organizations and groups in product and engineering services companies, Wafer Space is now known as a credible and prestigious brand to

reckon with. In addition, our management team is highly technically trained and hence is able to create the right synergy of business and technical decisions.



CLIENTS

Wafer Space has built a large client base and is working with most of the major Tier 1 and Tier 2 Semiconductor companies and with many Systems companies. Wafer Space provides services with a commitment to the client's needs and in getting designs to market in a timely fashion. We are a full front-to-back end design services solutions company utilizing proven methodologies to provide independent, pure-play design services catered for 100% client satisfaction. We don't believe in winning clients, we believe in "business partnerships" which has resulted in long term multiple year engagements with all our clients.

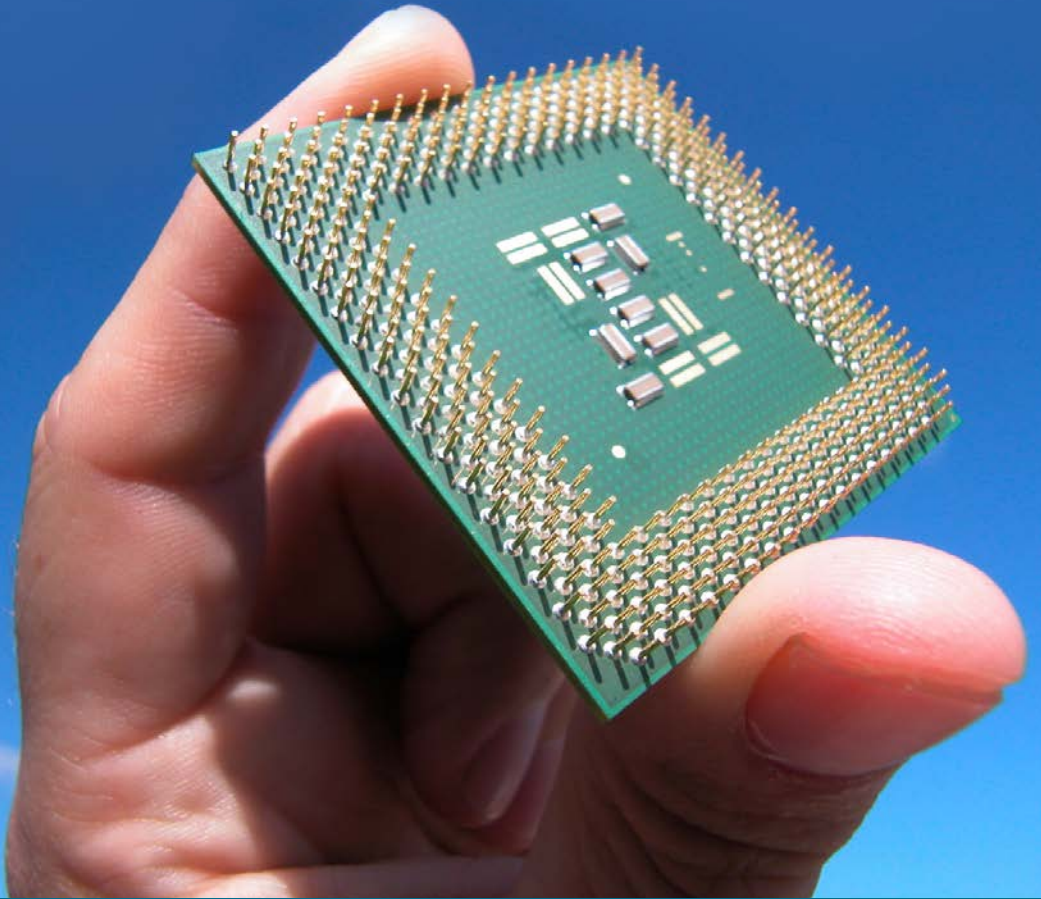
PROJECTS

At Wafer Space our focus is on working on highly complex and multifaceted projects. Our portfolio in semiconductor includes numerous turnkey projects and in embedded systems we have built complete products from spec. Today, we are known as one of the elite companies to have executed a complete SOC from Verification to GDS II.

CULTURE

At Wafer Space we believe in a work play balance and our benefits which are the best in the industry reflect these ideals. We have a unique, employee-centric work culture and ethos that seems to be working very well for us.

SEMICONDUCTOR



OUR EXPERTISE IN SEMI CONDUCTOR

Our edge comes from the fact that we only hire the best highly experienced talent in the industry. We have a culture of R&D, continuous learning and our own internal University of training material which is constantly updated

with the latest methodologies and technologies. We are focused on providing Semiconductor Services from RTL to GDSII and have worked on the most challenging and complex designs. Our expertise is in the following areas –

RTL DESIGN

Wafer Space is one of the few Engineering service companies with the ability to design complex IP's from scratch. Our highly technical RTL design team consists of senior architects and designers.

IP/SOC VERIFICATION

We have one of the best Verification teams in the industry; we have verified many very complex IP's from test planning through closure. Our SOC team has the ability and expertise to execute SOC designs in a turnkey mode.

STA, SYNTHESIS AND DFT

Wafer Space has teams with extensive capabilities and competence in STA, Synthesis and DFT. We have the ability to do STA and Synthesis at IP or at chip level. In DFT we have abilities in implementation and verification.

PHYSICAL IMPLEMENTATION

Our Physical Implementation team is one of the premier teams in the industry; we have executed complete projects in turnkey mode and we have built expertise in multiple domains, fabs and technology nodes.

ANALOG DESIGN

Our Analog team's strength is in Layout and in AMS Verification. In AMS Verification our team is proficient in building models and additionally can apply new methodologies like SV-UVM to Analog Verification.

POST SILICON VALIDATION AND FPGA PROTOTYPING

The Wafer Space FPGA and Emulation team has the experience in working with all industry standard Emulators and FPGA platforms.

We are well versed in all FPGA technologies and can synthesize very complex designs to an FPGA and execute prototyping projects.

WAFER SPACE DIFFERENCE

Domain Expertise

Expert Core Team

Inhouse Flows and Methodologies

Best Engineering Talent

Turnkey Project Execution

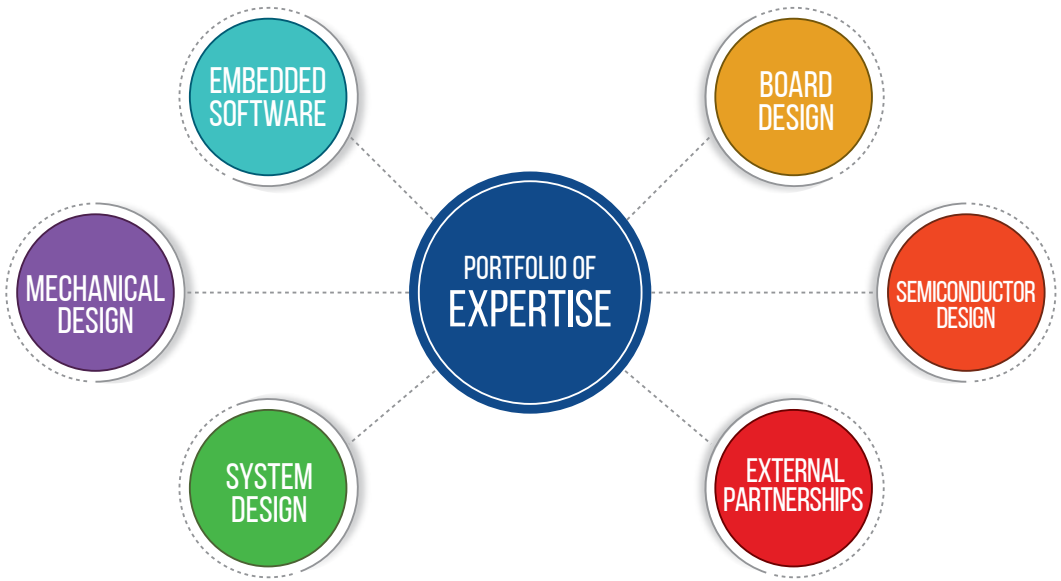
EMBEDDED AND SOFTWARE



OUR EXPERTISE IN EMBEDDED AND SOFTWARE

The Wafer Space Embedded team has the expertise required for end to end design and development of Embedded systems for multiple vertical markets. Our expertise in hardware, software and system design, combined with our Semiconductor strength is what differentiates us from the competition. Our clients include multiple Tier 1 and Tier 2 systems

and semiconductor companies. Our clients engage with us because of our deep knowledge combined with one of the top teams in the industry. We like to take on challenging projects as that is what we do very well. We are also actively engaged in research in multiple areas in the domains of Automotive, Industrial IOT and Smart Homes.



AUTOMOTIVE

In the automotive domain, we have in depth expertise in Advanced Driver Assistance Systems (ADAS), vehicle diagnostics, instrument clusters, AUTOSAR and others. In our in-house lab, our R&D team is researching and building cutting edge ADAS based solutions. Our goal is to be one of the most innovative solutions providers in the automotive domain.



INDUSTRIAL CONTROL

At Wafer Space, we see Industrial Control as an area which will see an exponential growth in the future. Our expertise is in complete product development and we are actively involved in doing research and building products for customers in this domain.



VALUE ENGINEERING

Considering that there are significant challenges in direct adoption of same version of products across geographies, we have invested in expertise acquisition that can enable the re-design of products with insight into the user demography, operational environment, cost and feature expectations. The value engineering team at Wafer Space can re-design and develop complex products for different geographies.



IOT

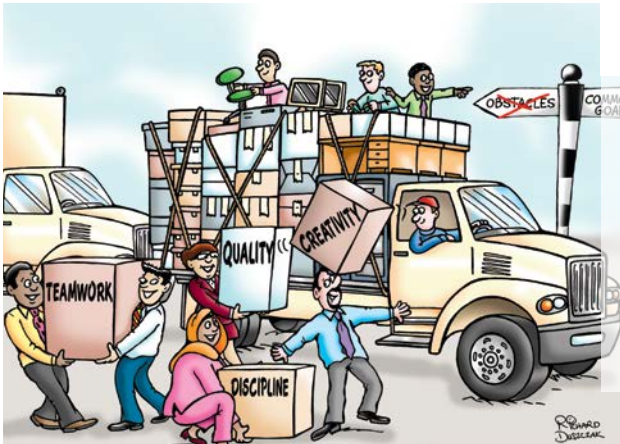
Internet-of-things or IOT has been a strong focus area for Wafer Space. We are developing solutions to address specific vertical markets and provide complete IOT solutions to customers. Today we are working with customers in Automotive and Industrial control and building IOT solutions for them.

CAREERS



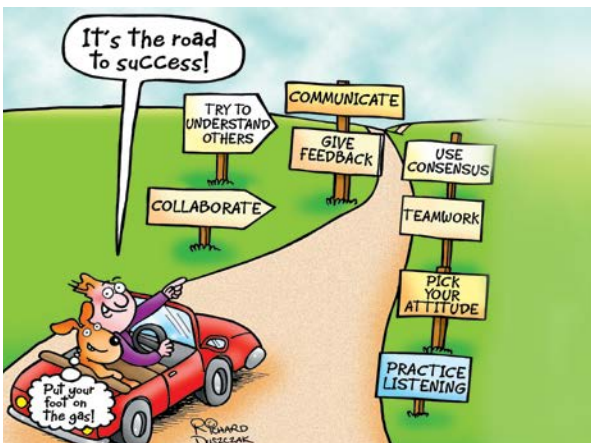
WORK WITH THE BEST TEAM

- Very rigorous selection criteria for engineers
- Highly experienced and skilled team
- Intellectually energetic peer group



HAVE FUN @WORK

- Our Motto: "All work and no play makes Jack a dull boy!"
- Open Door Policy– No Hierarchy
- Weekly, Monthly and Yearly Fun events to cut the daily grind
- Freedom of expression where YOU can speak your mind



ATTAIN YOUR CAREER GOALS

- Continuous education and learning
- Training in project planning, management - to hone in on managerial skills
- Leadership opportunities for all
- Defining your career goals

CAREER DEVELOPMENT

At Wafer Space, we believe that each position is a career path; not just a job. As a member of our team you are valued for your efforts and career growth is driven entirely by your performance and not by your years of experience. We will personally work with you to set up a career plan for you to assist you in achieving your career goals.

THE POWER OF IDEAS

Wafer Space believes in the inherent strengths of the individual; the concept that everyone has something to contribute if only given a chance.

- Nurturing Creativity
- Challenging your thinking
- Inculcating confidence

THE POWER OF LEARNING

- Internal trainings in latest techniques & methodologies—to keep up with international standards
- Training in project planning, management - to hone managerial skills
- Encouraging Direct Communication with Client.– to put you in the forefront of projects!
- Guidance in written and presentation skills

WAFER SPACE BENEFITS

At Wafer Space we believe in a work play and balance and our benefits which are the best in the industry reflect these ideals

Best in class Vacation, Holidays and Sickleave policies

Maternity / Paternity leave and Bereavement Leave

Company paid health insurance (Group Medclaim / Personal Accident Insurance)

Recreational Facility

Free lunch, snacks and refreshments

Regular company outings and gettogethers

Flexible work hours and work from home opportunities

Opportunities to work abroad



LEARN 
ENGAGE 
COLLABORATE



USA

2880 Zanker Road, Suite 203,
San Jose, CA, 95134
United States of America.

+1(408) 625 7195

Sales : sales@waferspace.com
Info : info@waferspace.com

INDIA

No 3/E Monarch Ramani, 5th Floor,
7th C Main, 3rd Industrial Block,
Koramangala, Bangalore - 560034, India.

+91 80-46720000

Sales: sales@waferspace.com
Info : info@waferspace.com